

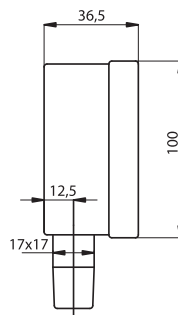
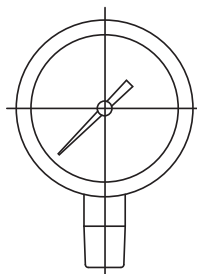
## › DN 100

### › CAMPO SCALA › RANGE

0/2,5 bar / Psi  
0/4 bar / Psi  
0/6 bar / Psi  
0/10 bar / Psi  
0/16 bar / Psi  
0/25 bar / Psi  
0/40 bar / Psi

### › CODICE › CODE

HDG.OAE08341M  
HDG.OAE08441M  
HDG.OAE08541M  
HDG.OAE08641M  
HDG.OAE08741M  
HDG.OAE08841M  
HDG.OAE08941M



## MANOMETRI PER PNEUMATICA E TERMOIDRAULICA

Pressure gauges for  
pneumatic applications

- › Manometro DN 100 mm - attacco radiale 1/2" GAS - M - cassa metallica nera - quadrante in alluminio fondo bianco con numerazione nero/rosso - lancetta nera in alluminio - trasparente in vetro, classe di precisione 1,6%.
- › Pressure gauge DS 100 mm - bottom connection 1/2" BSP - M - black metal case - white dial with black/red numbers - black aluminium pointer - glass window - silver welded, accuracy class 1,6%.



## › DN 40

### › Attacco posteriore › Back connection

### › CAMPO SCALA › RANGE

0/6 bar  
0/6 bar  
0/10 bar  
0/10 bar / Psi  
0/16 bar

### › ATTACCO › CONNECTION

1/8" gas/bsp  
1/4" gas/bsp  
1/8" gas/bsp  
1/8" gas/bsp  
1/8" gas/bsp

### › CODICE › CODE

011D.A08511M  
011D.A08521M  
011D.A08611M  
011D.A10611M  
011D.A08711M



## MANOMETRI CASSA INOX DN40 E DN50

Stainless steel case pressure  
gauges DS40 and DS50

- › Manometro standard, cassa inox, interni in ottone, attacco radiale o posteriore, classe di precisione 1,6% secondo EN 837-1, grado di protezione IP 40.
- › Standard pressure gauge, AISI 304 case, brass movements, bottom or back connection, accuracy 1,6% as per EN 837-1, protection IP 40.



## › DN 50

### › CAMPO SCALA › RANGE

0/10 bar / Psi  
0/25 bar / Psi  
0/160 bar / Psi

### › POSIZIONE ATTACCO › CONNECTION POSITION

posteriore/back  
radiale/bottom  
radiale/bottom

### › ATTACCO › CONNECTION

1/8" gas/bsp  
1/4" gas/bsp  
1/4" gas/bsp

### › CODICE › CODE

011D.B10611M  
011A.B10821M  
011A.B11221M



- › Per esecuzioni differenti dallo standard non esitate a contattare i nostri uffici commerciali.
- › For products out of the standard range, please contact our sales offices.