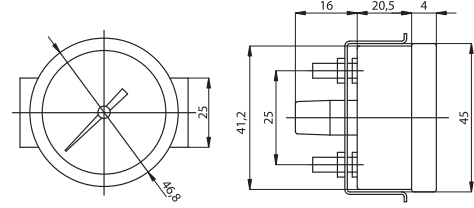




MANOMETRI PER PNEUMATICA DN 40
Pressure gauges for pneumatic applications ds 40

- Manometro standard, cassa ABS nera, dn 40 mm, interni in ottone, classe di precisione 2,5%. Cassa metallica nera per strumenti per montaggio a pannello.
- Standard pressure gauge, ABS black case, ds 40 mm, brass movement, accuracy 2,5%. Black metal case for panel mounting instruments.

> DN 40

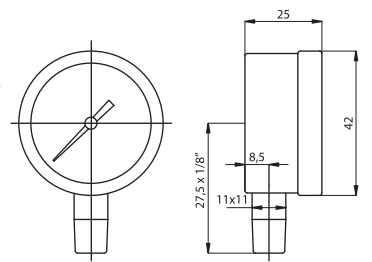


- > Attacco posteriore con staffa per pannello foro DN 41,5 mm
- > Back connection - Panel mounting with bracket - Hole DS 41,5 mm

> CAMPO SCALA > RANGE	> ATTACCO > CONNECTION	> CODICE > CODE
-1/0 bar / "Hg 0/2,5 bar / Psi 0/4 bar / Psi 0/6 bar / Psi 0/10 bar / Psi 0/12 bar / Psi 0/16 bar	1/8" gasc/bspt	HDG.OBA20112M HDG.OBA10312M HDG.OBA10412M HDG.OBA10512M HDG.OBA10612M HDG.OBA11612M HDN.OBA08712M

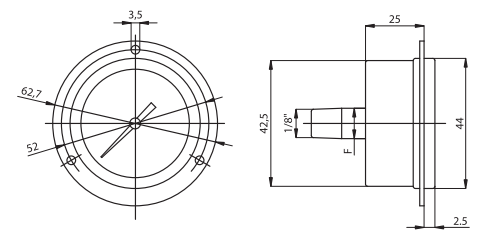
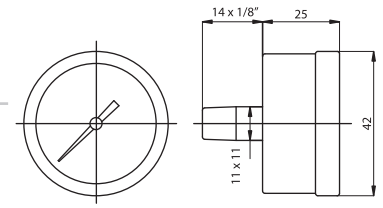
> Attacco radiale > Bottom connection

> CAMPO SCALA > RANGE	> ATTACCO > CONNECTION	> CODICE > CODE
-1/0 bar / "hg 0/4 bar / Psi 0/6 bar / Psi 0/10 bar / Psi 0/12 bar / Psi 0/25 bar / Psi 0/16 bar / Psi	1/8" gasc/bspt 1/8" gasc/bspt 1/4" gas/bsp	HDG.OAA20112M HDG.OAA10412M HDG.OAA10512M HDG.OAA10612M HDG.OAA11612M HDG.OAA10812M HDG.OAA10721M



> Attacco posteriore > Back connection

> CAMPO SCALA > RANGE	> ATTACCO > CONNECTION	> CODICE > CODE
-1/0 bar / "hg -1/+3 bar / Psi 0/1 bar / Psi 0/1,6 bar / Psi 0/2,5 bar / Psi 0/4 bar / Psi 0/6 bar / Psi 0/10 bar / Psi 0/12 bar / Psi 0/16 bar / Psi	1/8" gasc/bspt 1/8" gasc/bspt	HDG.ODA20112M HDG.ODA28312M HDG.ODA10112M HDG.ODA10212M HDG.ODA10312M HDG.ODA10412M HDG.ODA10512M HDG.ODA10612M HDG.ODA11612M HDG.ODA10712M



- > Attacco posteriore con flangia 3 fori per pannello foro DN 42,5 mm
- > Back connection - Panel mounting with front flange - Hole DS 42,5 mm

> CAMPO SCALA > RANGE	> ATTACCO > CONNECTION	> CODICE > CODE
0/2,5 bar / Psi 0/4 bar / Psi 0/6 bar / Psi 0/12 bar / Psi	1/8" gasc/bspt	HDN.OEA10312M HDG.OEA10412M HDG.OEA10512M HDG.OEA11612M